



Golden Sunset Martin Road, Bush Estate, Eccles-On-Sea, NR12 0SE

£165,000



1



1



1



E



£165,000

# Golden Sunset Martin Road, Bush Estate

Eccles-On-Sea, NR12 0SE

- Detached Bungalow
- Short Walk To The Beach
- Adjoining Summer House
- Spacious Driveway Parking
- Popular Coastal Location
- One Double Bedroom
- Wood Burning Stoves
- Early Internal Viewing Recommended

Aldreds are pleased to offer this beautifully presented detached bungalow of non-standard construction, located in the popular rural coastal village of Eccles on Sea. This delightful, n unique property offers charming accommodation including a kitchen, lounge, bedroom, shower room and an adjoining timber summer house. The property offers two wood burning stoves, one with a back boiler for radiator heating, spacious driveway parking and a delightful enclosed rear garden. An ideal permanent residence or holiday home/let, this attractive property is located just a short distance away from the lovely sandy beach at Eccles on Sea. Early internal viewing is highly recommended to appreciate.



## Kitchen 9'4" x 7'2" (2.87m x 2.19m)

Entrance door to side aspect, front facing window, a range of Shaker style kitchen units with solid wood butchers block work surface, ceramic butler sink with mixer tap, power points, electric cooker point, space for fridge-freezer, quarry tiled floor, doorway giving access to;

## Lounge 19'9" x 9'0" (6.03m x 2.76m)

Two rear facing windows, quarry tiled floor, brick built fireplace surround with a wood burning stove with back boiler, radiator, power points, doorway giving access to;

## Lobby

With access to;

## Adjoining Summer House 18'9" x 15'6" (5.72m x 4.73m)

A wonderful garden facing additional space of a timber construction with windows to side and rear, glazed double doors to garden, wood burning stove, power points.

## Inner Hall

Inset shelving, doors leading off;





## Directions

Proceeding along Abbots Way take the second right hand turn into Martin Road where the property can be found a short way along on the right hand side located by our FOR SALE board.

## Shower Room

Obscure glazed window to side aspect, tiled shower cubicle with electric shower, radiator, tiled flooring, low level w.c., hand wash basin with fitted storage surrounding.

## Bedroom 16'4" x 9'0" reducing to 5'11" (5m x 2.75m reducing to 1.81m)

Formerley two seperate bedrooms, this spacious room has two front facing windows, power points, two radiators, cupboard housing a hot water cylinder.

## Store 10'9" x 3'1" (3.3m x 0.96m)

With an obscure glazed window to side aspect, door giving access to rear garden, radiator, open fronted cupboard housing power points and plumbing for washing machine with side facing window.



### Outside

The property is approached with a spacious shingled driveway providing ample parking space for a number of vehicles, well stocked borders, access to the side of the property via a wrought iron gate to a pathway to entrance and leading to the lovely enclosed rear garden which is beautifully landscaped, with a lawned area and raised beds, well stocked with a variety of shrubbery and planting, two timber garden sheds and greenhouse.

### Tenure

Freehold.

### Services

Mains water, electric and drainage.

### Council Tax

North Norfolk District Council. Band 'A'

### Energy Performance Certificate (EPC)

EPC Rating: E.

### Location

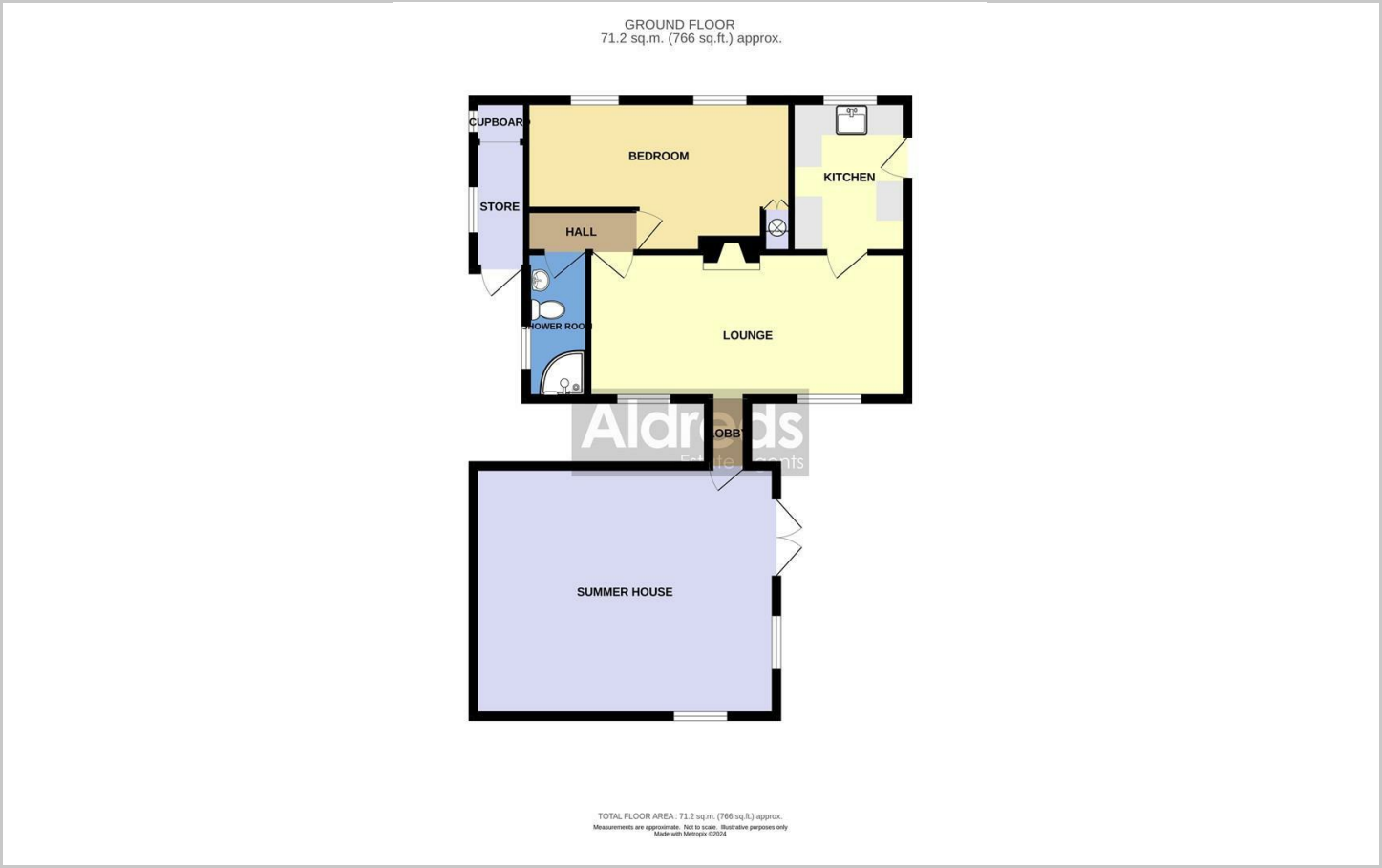
Eccles on Sea is rural coastal village with a lovely sandy beach, situated on the North East Coast between Happisburgh and Sea Palling. The Broadland town of Stalham is approximately four miles away with facilities including a variety of shops, schools, health centre, post office, bus service and a Tesco supermarket.

### Reference

PJL/S9831



Floor Plans



Viewing

Please contact our Aldreds Stalham Office on 01692 581089 if you wish to arrange a viewing appointment for this property or require further information.

Disclaimer  
These particulars are issued on an understanding that all negotiations shall be conducted through Messrs. Aldreds. Please note: Messrs. Aldreds for themselves and for the vendors or lessors of this property whose agents they are given notice that: 1. Particulars are set out as a general outline only for guidance of intending purchasers or lessees, and do not constitute nor constitute part of, an offer or contract. 2. All descriptions, dimensions, references to condition and necessary permissions for use and occupation, and other details are given without responsibility and any intending purchasers or tenants should not rely on them as statements or representations of fact but must satisfy themselves by inspection or otherwise as to the correctness of each of them. 3. No person in the employment of Messrs. Aldreds has any authority to make or give any representation or warranty whatever in relation to this property. 4. If you are proposing to visit the property and are travelling some distance please check with Aldreds on the issue of availability prior to travelling. 5. Aldreds Property Consultants and associated services may offer additional services to the prospective purchaser for which they will be entitled to receive a commission. Aldreds are pleased to be working with Mortgage Advice Bureau. They're an award-winning mortgage broker with over 1,400 advisers across the UK, and have access to over 12,000 mortgage products from over 90 lenders. Aldreds Estate Agents Ltd receive a commission of £200 on each completed case. Your home may be repossessed if you do not keep up repayments on your mortgage. There may be a fee for mortgage advice. The actual amount you pay will depend upon your circumstances. The fee is up to 1%, but a typical fee is 0.3% of the amount borrowed. Mortgage Advice Bureau is a trading name of Mortgage Seeker Limited which is an appointed representative of Mortgage Advice Bureau Limited and Mortgage Advice Bureau (Derby) Limited which are authorised and regulated by the Financial Conduct Authority. Mortgage Seeker Limited Registered Office: Lovewell Blake, Sixty Six North Quay, Great Yarmouth, Norfolk, NR30 1HE. Registered in England Number: 03721415. 6. Potential purchasers should check with their providers that the broadband and mobile phone coverage they would require is available.

Location Map



Energy Performance Graph

